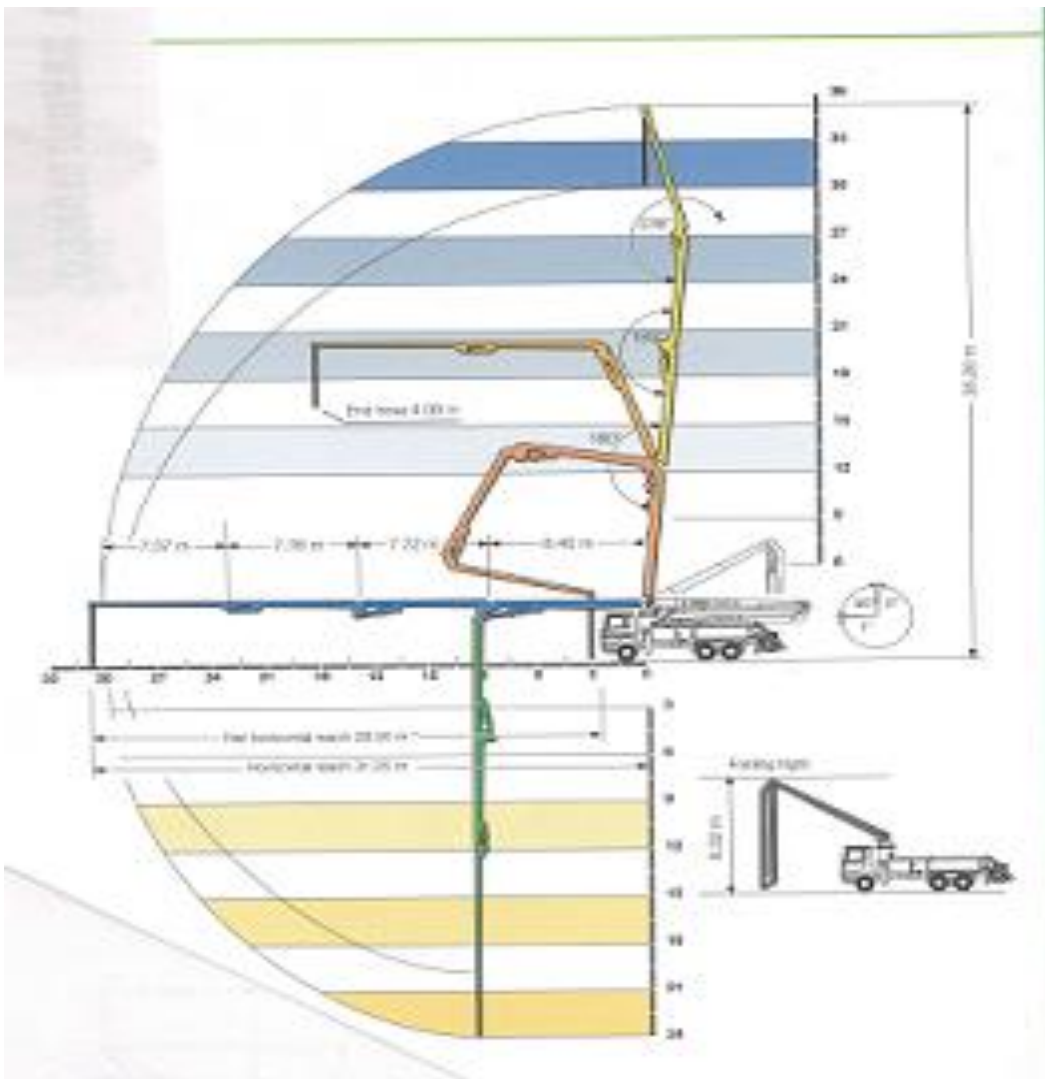




Technical Specifications – Truck Mounted Concrete Pump with Placer Boom:



TECHNICAL PARAMETER	UNIT	DETAILS
<u>Concrete Pump</u>		
Make & Type		Schwing Stetter P 1620
Maximum Theoretical Output Rod Side	m ³ /hr	90
Maximum Theoretical Rod Side	Bar	85
Pumping Cylinder Diameter	mm	200
Pumping Cylinder Length	Mm	1600
Maximum Number of Strokes Per Min	Number / Minute	32
<u>Placing Boom</u>		
Make & Model		Schwing Stetter 36X
Vertical Reach	Meters	35.2
Horizontal Reach Gross	Meters	31.25
Length of End Hose	Meters	4.0
Delivery Line Diameter	Mm	125
Slewing Circle	Degree	540 Degree
Support – Front		Telescopic X
Support – Rear		Telescopic
Number of Arms	Numbers	4
Remote Control With Cable	Meters	15
Minimum Height to Open the boom	Meters	8.32
Height of Articulation	Meters	4.1 / 12.05 / 19.65 / 27.25



<u>Vehicle Specifications</u>		
Make / Model	-	Ashok Leyland / U 2820_6X4 Boom Pump
Engine		H Series 6 Cylinder CRS with iEGR/SCR
Maximum Power	hp@RPM	200@2400
Maximum Torque	Nm@RPM	700Nm @ 1200-2000 rpm
Frame		275 mm X 75mm X 8mm – Bolted Construction
Fuel Tank Capacity	Liters	220 Liters
Ad Blue Tank Capacity	Liters	48 Liters
Load Body Size	Feet	26'
Wheel Base	Mm	5750
Overall Length with Bumper	Mm	10360
Front Overhang	Mm	1550
Rear Overhang	Mm	2350

